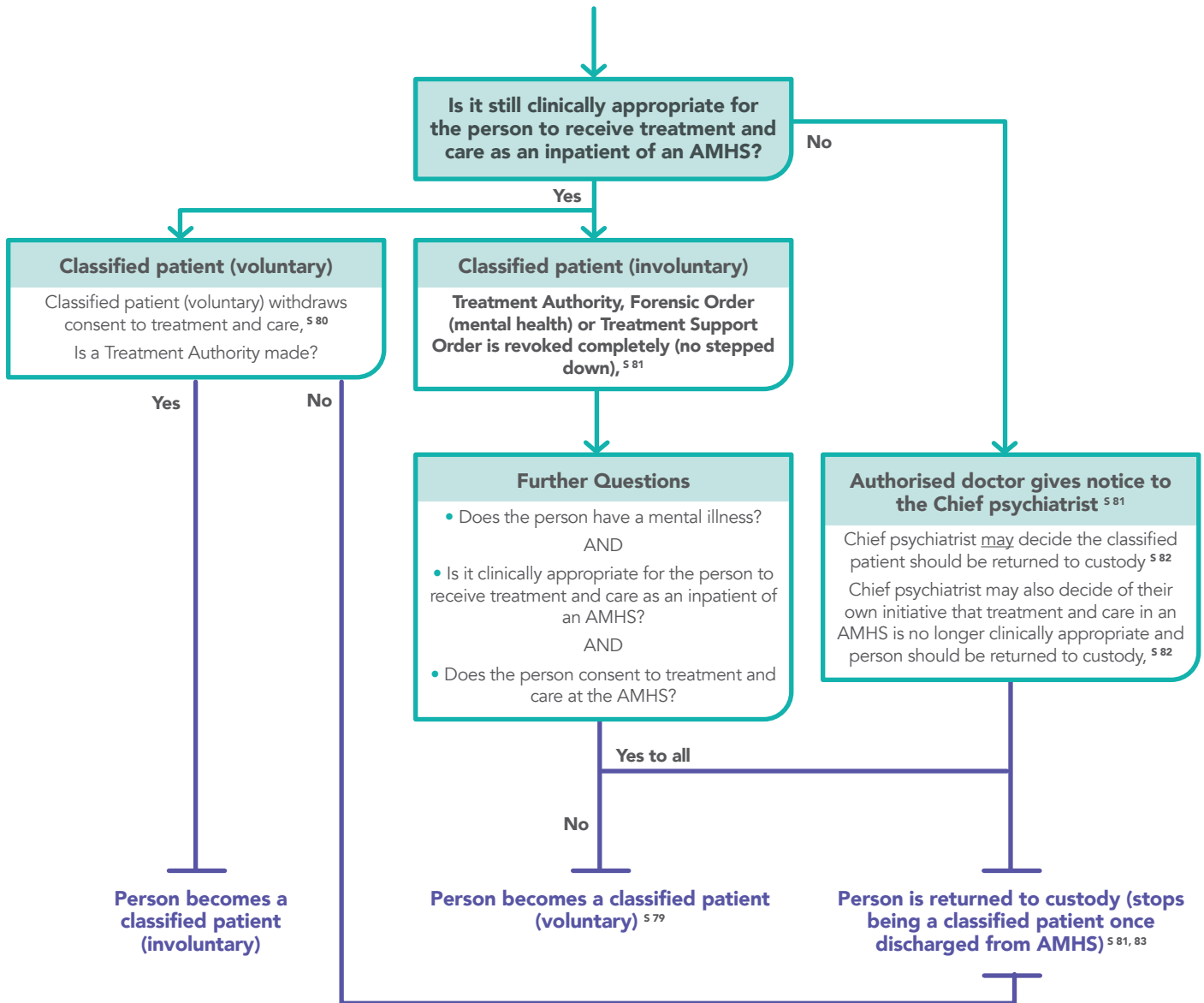


Classified Patient in AMHS for Treatment and Care

(for classified patients in AMHS for assessment only, see "Becoming a Classified Patient" flowchart)



Classified patients refer to patients that are in custody for pending or finalised criminal charges but require treatment in an authorised mental health service (AMHS).

Classified Patients and Criminal Proceedings

All criminal proceedings against a patient are suspended while they are a classified patient. **s 616**

The court can still grant bail and have charges withdrawn. **s 620**

A person also stops being a classified patient if:

- The Mental Health Court makes a decision about the criminal charges: **s 84**
- Lawful custody of the patient ends, for example, the person is granted bail, charges have been discontinued, or sentence has been served: **s 85**

See also the Chief Psychiatrist's Policy (https://www.health.qld.gov.au/_data/assets/pdf_file/0025/465172/cpp-classified-patients.pdf) and Chief Psychiatrist's Practice Guidelines (<https://www.health.qld.gov.au/?a=573997>)

Unless otherwise specified, references to sections (s) are from the *Mental Health Act 2016* (Qld)